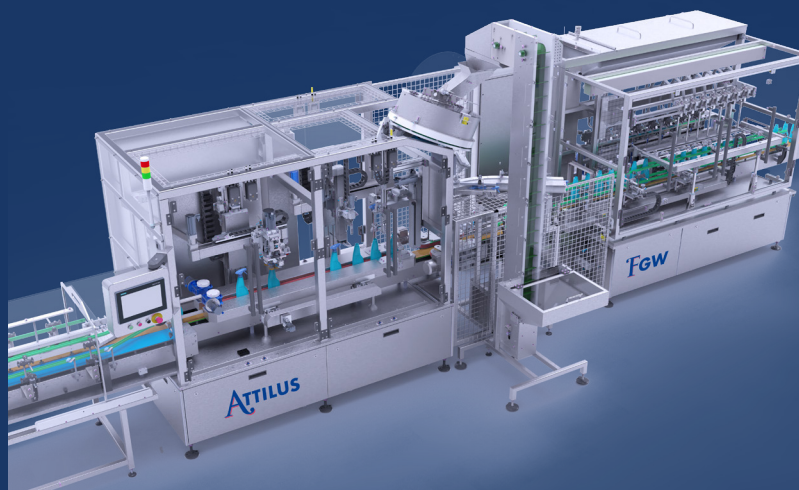


Case Study – Sano-Bruno's Enterprises

Optimising Chemical Packaging Line with Shemesh Automation



Sano-Bruno's Enterprises is a market leader in home cleaning products with over 400 SKUs. To streamline operations and reduce waste, Sano partnered with **Shemesh Automation** to deploy a high-end, fully integrated packaging line. The line handles over 10 products including angle duck-neck bottles and multiple cap types while maintaining speed, precision and hygiene.

Company & Context

Sano-Bruno's manufactures toiletries, hygiene and household cleaning products, laundry detergents, pesticides and repellents, and cosmetics. Growing SKU diversity demanded fast changeovers, consistent quality and improved yield without compromising safety or compliance.

The Challenge

- Handle 10+ SKUs, including slanted neck bottles
- Support screw caps, pump dispensers and trigger sprayers on one line
- Reduce downtime and filling waste at scale
- Maintain hygiene, safety and compliance

The Shemesh Solution

A complete **Turnkey Filling Line** integrating advanced robotics, servo technology and Industry 4.0 connectivity.

FGW60 Automatic Gear Pump Liquid Filling Machine - Performance Specifications

- Throughput up to 60 products/min
- $\pm 0.15\%$ full fill volume portioning tolerance for waste reduction
- Proprietary anti-overflow and no-drip screwless showerhead nozzles
- Supports oval, conical, round and rectangular containers
- Built-in CIP; explosion-proof and corrosion-proof upgrades available
- All liquid-contact metals in SS316; SS304 elsewhere
- Industry 4.0 ready

ATILUS Continuous Robotic Trigger, Pump & Screw Capper - Performance Specifications

The ATILUS robotic capping machine from Shemesh Automation delivers precise, high-speed cap application for trigger sprayers, pump dispensers, and screw caps. Designed for continuous motion production lines, ATILUS integrates advanced robotics, servo-driven pick & place systems, and intelligent cap sorting.

- Throughput: Up to 50 products per minute per capping head
- Tool-less format changeover: Under 20 minutes (standard), under 5 minutes (servo automatic)
- Supports trigger, pump, and screw caps
- Servo-adjustable torque with $\pm 5\%$ accuracy

A fully manufactured and turnkey Shemesh Automation solution including:

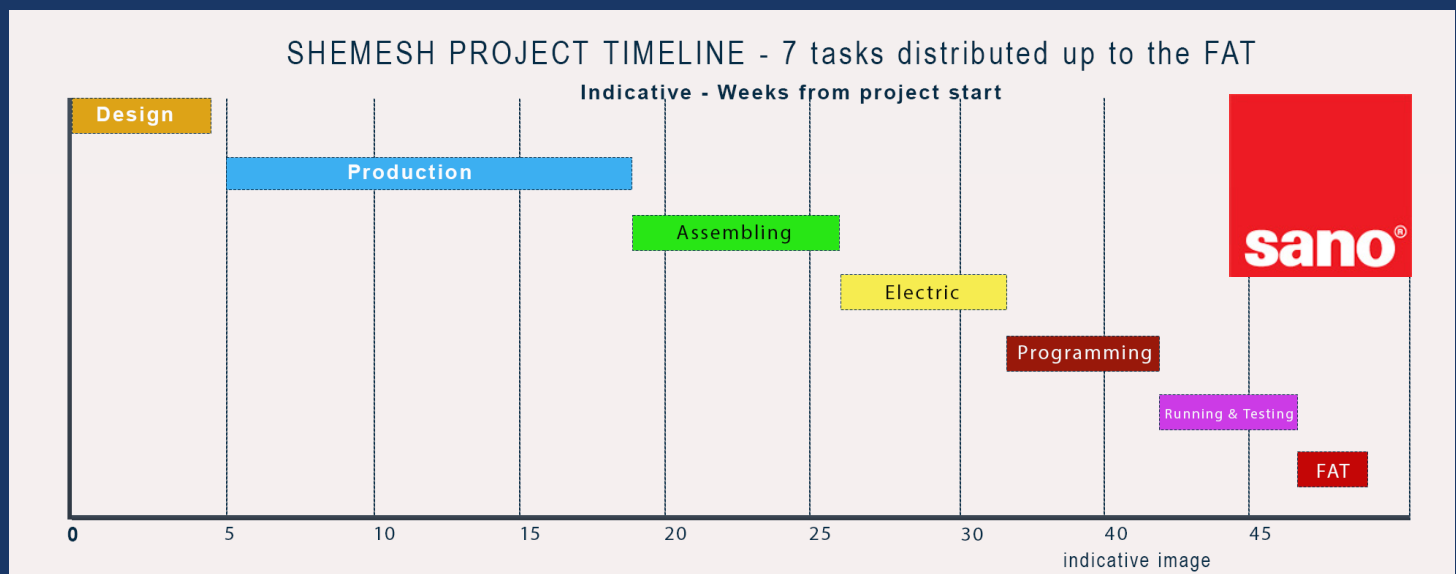
- Bottle descrambler or robotic feeder
- Fully automatic labelling machine
- Automatic form, fill and seal case packer
- Automatic conduction sealing machine
- Robotic palletiser

Comparative Results



CRITERIA	BEFORE SHEMESH	AFTER SHEMESH
Production Efficiency	Frequent downtime and manual adjustments	60 prod/min (filler) and 50/min (capper per head) with continuous flow
Waste Control	High variability in filling volume	±3 ml accuracy with anti-drip and anti-overflow mechanisms
Flexibility	Separate machines needed for different products, limited adaptability	One line handles 10+ SKUs with multiple bottle shapes and cap types
Quality Consistency	Inconsistent torque and sealing	Servo torque ±5% ensures consistent capping quality
Hygiene & Safety	Basic compliance only	Sanitary design with SS304/316, CIP, explosion/corrosion-proof options
Scalability	Manual systems that are hard to upgrade	Industry 4.0 ready, modular architecture and robotic integration

Indicative Project Timeline (Gantt Outline)



Measurable Impact

- Higher throughput with fewer stoppages
- Reduced product giveaway and scrap through precise dosing
- Faster SKU changeover on one versatile line
- Improved product quality and consistency
- Future-ready digital connectivity and remote diagnostics

FOR MORE DETAILS – CONTACT US:



sa@shemeshautomation.com



(UK) +44 754 620 6583

(US) +1 920 325 0050

(IL) +972 3 550 9946

(FR) +33 6 1521 0409



www.shemeshautomation.com