

SIEMESH AUTOMATION
PRUDENT PACKAGING SOLUTIONS

MULTI 1



The World's premier horizontal FFS.

- Throughputs offered up to 140ppm
- Servo-driven Cam design fully automatic pharma-grade machine
- A footprint smaller than a sofa at just under 2.5m x 1.5m
- Applicable to customer sample sachets and boxes for the food and beverage, beauty and cosmetics, pharma and chemical industries



Let us build your vision

Specifically designed for the creation of customer samples, the **MULTI 1** is a fully automatic **HORIZONTAL** FFS, stacker, packer and product auto feeder.

MULTI 1

Whether it is sticks, powder, gels, liquids, inks, pastes, creams, shampoos or conditioners,

the Shemesh **MULTI 1** is designed to fill a wide range of customer sample sachets and boxes.



Quick fact sheet

- Designed for making small and medium sized sachets
- Throughputs offered up to **140ppm!**
- Footprint under **2.5m² x 1.5m²**
- Servo-driven Cam design
- **Western European pharma grade** machine build as standard
- **Fully automatic feed to form, fill, seal, cut, stack and carton pack** sachets with complete QC
- **Coding and printing** via an internal integrated easily accessible Markem Imaje printer
- **Pre-cut perforation**
- **Auto stacking and packing** of sachets into boxes
- Manoeuvrable and fully programmable user-friendly **Siemens HMI & PLC**
- **Built in CIP** (cleaning in place) mechanism
- Entire machine constructed with **Stainless Steel 316L**

STANDARD SPECS

- **Industry 4.0** ready
- **Festo (Germany)** pneumatics and servo systems
- Complete **SST304/316L** design
- **FDA** approved piping as applicable
- **Siemens (Germany)** PLC & HMI and motors
- **Banner** sensors
- **E-stop** buttons and safety interlocks wired through **CAT IV** safety controller
- **CE Marking**
- Adheres to **GMP (General Machine Practice)**



Photo: Shemesh Automation MULTI 1 – complete turnkey solution for flat sachet samples and boxes.



Samples can be stacked and packed into preformed boxes.



"As a long standing Shemesh Automation customer we knew we were in good hands when decided to buy their new MULTI 1 machine. What we did not know is that our expectations would be completely exceeded during this project – in the most positive manner. Not only were communications very well managed across multi-cultural, cross-global teams with the Shemesh team available around the clock – but the Multi1 itself would ultimately pleasantly surprise with its accuracy, production consistency, attention to the smallest details and staggering simplicity – all of which are truly overwhelming."

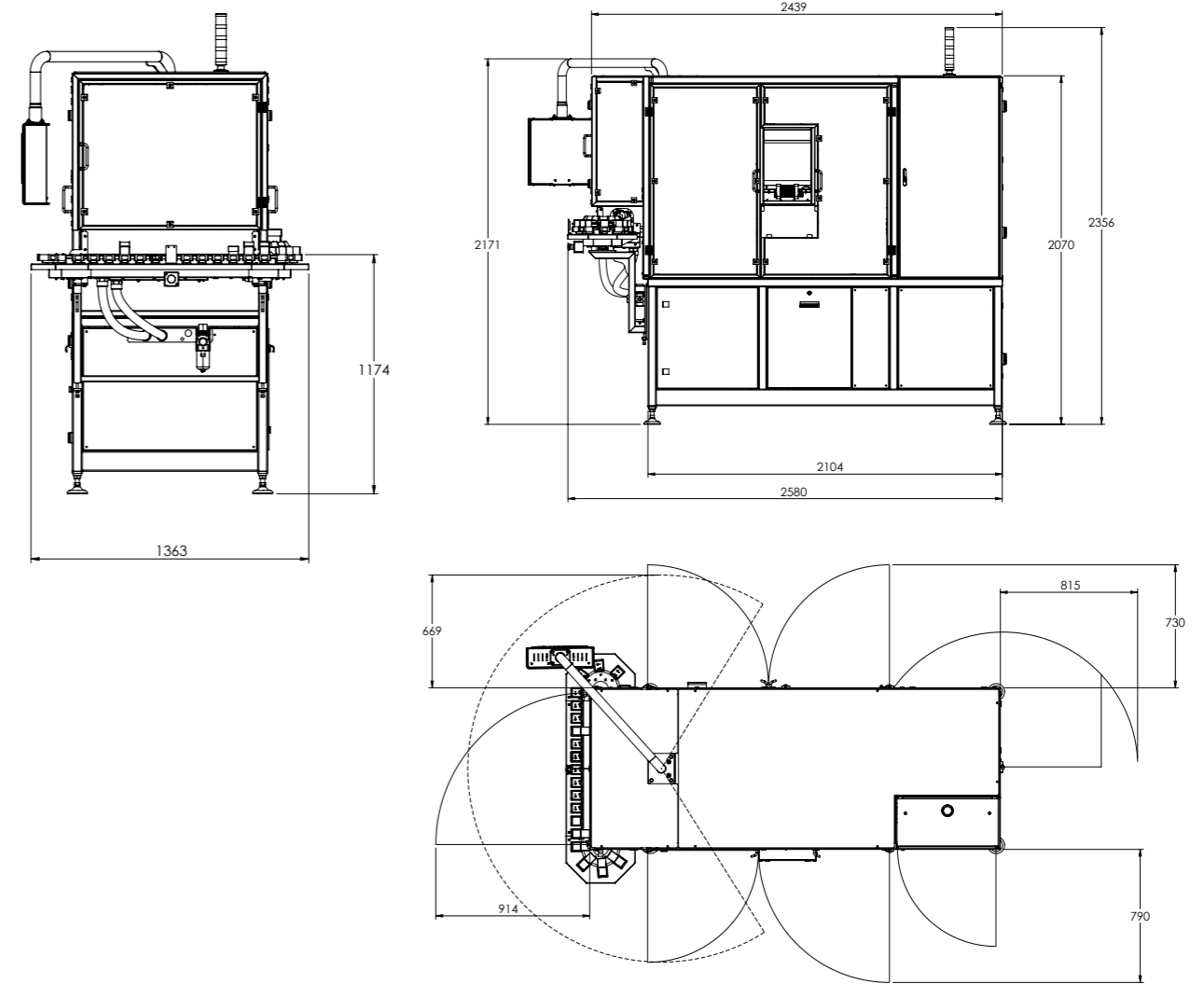
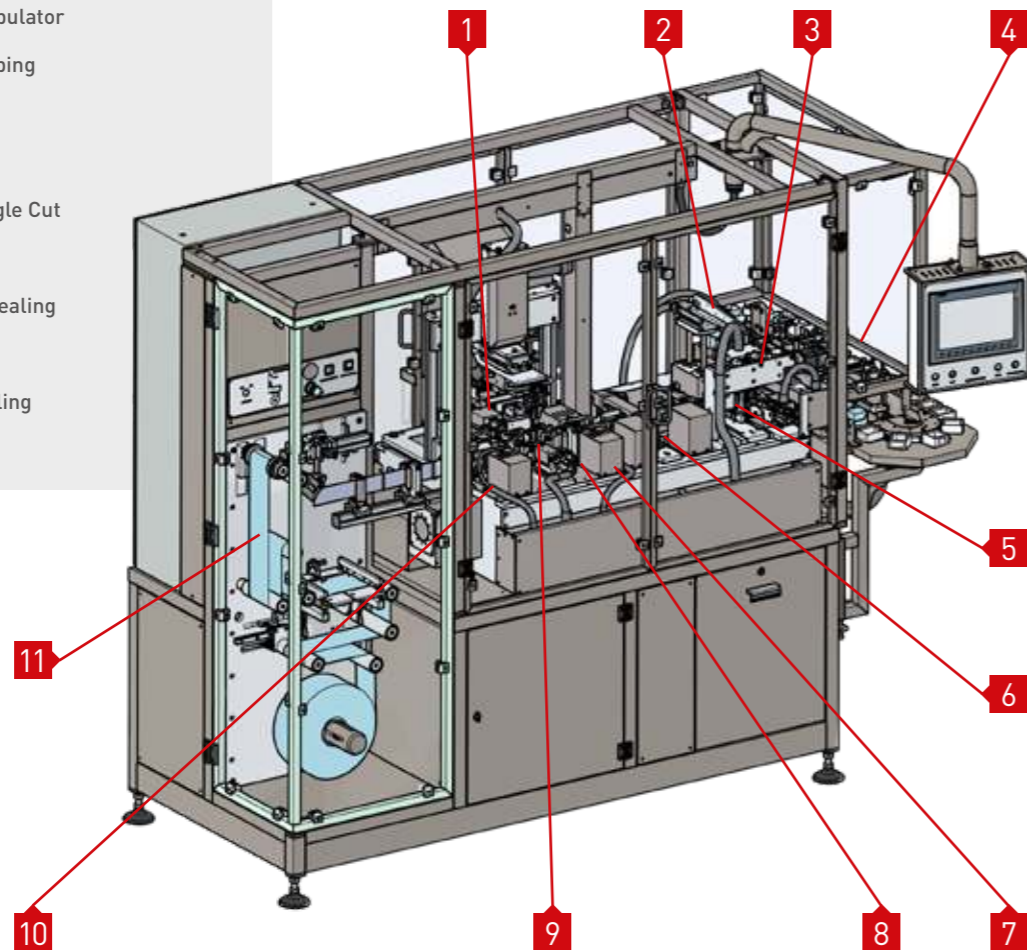
Zvi Nachum, Lead Medical Equipment Development Engineer, I-Med

MULTI 1 – Key stations

Basic indicative MULTI 1 layout

Generic MULTI 1 Layout

- 1 Cards Feeding and Extracting
- 2 Packed Sticks Manipulator
- 3 Packed Sticks Grouping
- 4 Case Packing
- 5 Foil Cutting
- 6 Easy Opening Triangle Cut
- 7 Perforation
- 8 Second Stage Foil Sealing
- 9 Sticks Inserting
- 10 First Stage Foil Sealing
- 11 Foil Feeding





“Our people have driven Shemesh Automation’s success for over 30 years through sustained, superb execution across a range of markets and products.”
Eli Shemesh, Founder



Global presence



Wisconsin, USA
North America HQ

State-of-the-art machine showroom, sales and after-sales support, spare parts inventory and North American logistics centre.

Hampshire, UK
Global Headquarters

CEO's office, Marketing, Strategy, Business Development and Finance.



Semur-en-Auxois, France
European HQ

French team, Tech centre featuring state-of-the-art machinery showroom, sales and after-sales support and European logistics centre.

Tel Aviv, Israel
R&D and Manufacturing

Operations, R&D, Engineering and Manufacturing.



WORLDWIDE

15

International branches

United Kingdom
North America
France
Latin America
Israel
Spain
United Arab Emirates
South Africa
India
China & Hong Kong
Japan & Indonesia
Australia & New Zealand

Over

1800

machines...

CAPACITY

x2

Manufacturing sites

...supported in over

30

countries

6

Trade shows per year

Global representation

Shemesh Automation collaborates with teams on complex Fortune 500 projects and has gained not only a proven and trusted network to put at your disposal, but also invaluable knowledge to help drive your projects.

We share our expertise to guarantee the maximum productivity of your machinery. Our global network of sales representatives and After Sales service specialists offer you flexible and efficient support. Our highly-qualified technicians ensure a fast solution whenever and wherever you need it.

REGIONAL HEADQUARTERS

United Kingdom

Shemesh Automation UK Ltd
Contact: Mr. Andrew Hayward

North America Shemesh USA Inc
Contact: Mr. Jim Livermore

France Shemesh Automation
France Contact: Ms Nelly Desbiens

Israel Shemesh Automation Israel
Ltd Contact: Mr. Luis Coronel

OTHER OFFICES

Spain Shemesh Spain Contact: Mr.
Joaquim Julve

United Arab Emirates Shemesh
Automation UAE Contact: Mr.
Johann Van Niekerk

South Africa

Shemesh Automation SA
Contact: Mr. Simon Daniels

India

Shemesh Automation India
Contact: Mr. Shilpan Patel

China & Hong Kong

Shemesh Automation Asia
Contact: Mr. Charles Yip

Japan & Indonesia

Shemesh Automation Japan & Indonesia
Contact: Mr. Kentaro Taguchi

Australia & New Zealand

Shemesh Automation Australia
& New Zealand
Contact: Mr. Cameron McKenzie

LATIN AMERICA

Contact: Mr. Nir Baram

GLOBAL SALES Contact: Mr. Luis
Coronel

For all sales enquiries please contact us via sales@shemeshautomation.com



Explosion proofed & Corrosion proofed

Corrosive or alcohol-based solutions dictate that your equipment is duly fitted to professionally handle these delicate environments. Years of experience in the field made it possible for us to tailor for you the exact protection so your production is safe and stable while your people and equipment are well protected keeping your facility at the top of the range.

All of our machines are constructed using SST 304/316L, and are available with anti corrosive proprietary coating. As well as the machine base, all vital parts such as nozzles and pumps are also specially treated.



Offices:

United Kingdom

Shemesh Automation UK Ltd
85 Great Portland Street
First Floor
London W1W 7LT
United Kingdom
Tel: +44 758 428 1707



USA

Shemesh USA Inc
1040 Centennial Street
Green Bay
Wisconsin 54304
United States
Tel: +1 920 325 0050



Israel

Shemesh Automation Israel Ltd
4 Ha-Sar Khayim Moshe
Shapira St.
Rishon Lezion 7570406
Israel
Tel. +972 3 550 9946



France

Shemesh Automation France
Bopak SARL Building 10 Rue
de la Croix Belin Semur-en-
Auxois 21140
France
Tel. +33 6 15 21 04 09



www.shemeshautomation.com



Let us build your vision